

Conversion Femsa to Ducati CDI

http://www.scooterbbs.com/bbs/dcboard.php?az=show_topic&forum=10&topic_id=408708&mesg_id=408708&listing_type=search

Recently rebuilt engine for xmas tree issues and after I got it buttoned up again the Femsa broke. Had a working blue Ducati CDI lying around the garage so tried the suggestion on this site to see if I could plug and play:

<http://www.scooterrescue.com/Femsa2Ducati.html>

Bike started but wouldn't throttle up from an idle. Sounded really rough with any throttle. So I built the noise filter found at bottom of above URL and it worked like a charm.

Have attached diagram showing exactly how to hook everything up and pics of the solder job, completed filter, and filter in bike. Here are the links to the exact resistor and capacitor I got from my local Radio Shack:

<http://www.radioshack.com/product/index.jsp?productId=2062343>

<http://www.radioshack.com/product/index.jsp?productId=2102480>

Make sure you get a non-polarized capacitor. And that resistor should be 1/4 watt. So if you have Femsa issues and a Ducati CDI this fix will cost you \$2 and about 30 minutes. I didn't know how to solder before this but figured it out. And yes I could have used better connectors and shrink tube.

Special thanks to Scooter Rescue and Jon Scott's fix. And to Patrick Owens for the sweet diagram and technical help. And Christopher Ward for everything else and tips on soldering.

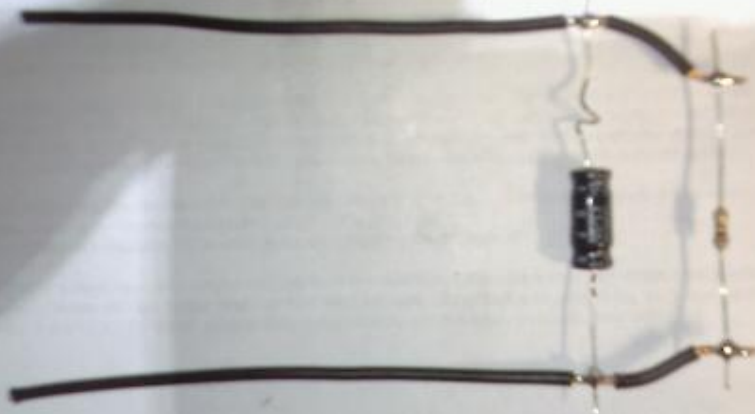
Hope this helps other people! I'm so psyched. Bike is running so smoothly now. And don't have to worry about Femsa quitting far from home.

-Mike Clinton

PS - Only thing you have to ground is the ground wire itself that comes directly out of the Ducati CDI.

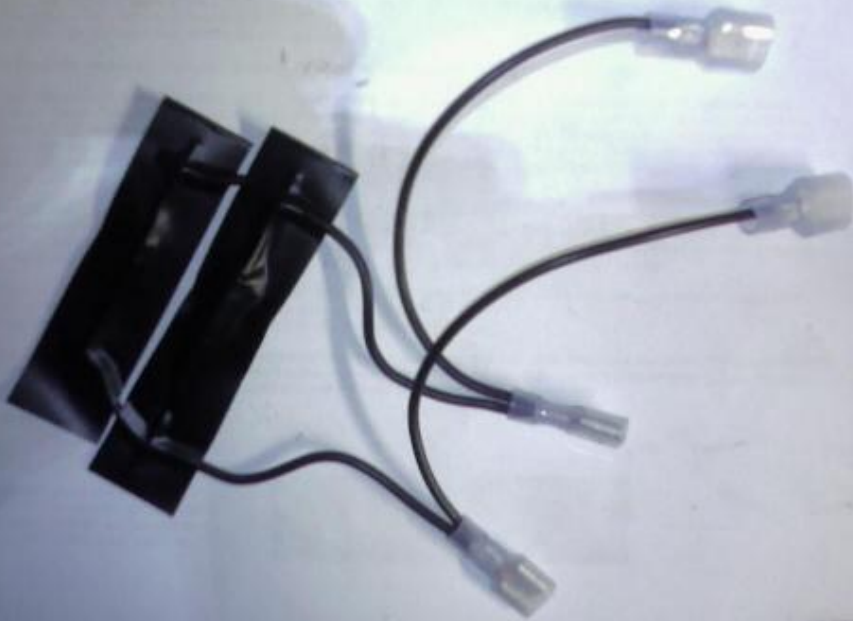
PSS - As suggested on the Scooter Rescue site, just cap the blue stator wire. You don't need it for this fix.

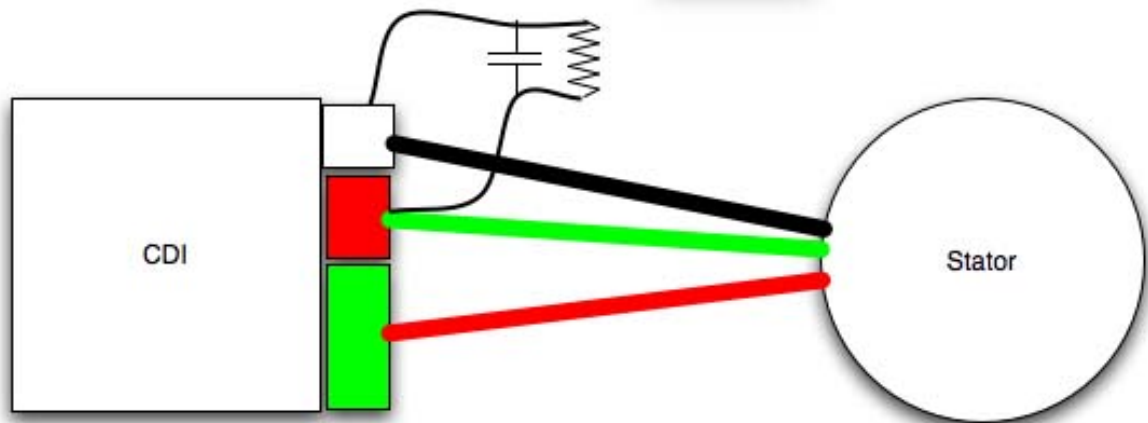
- DON'T NEED CHARGING FILTER
- USE 1/4 WATT RESISTOR.



NOTES FROM ATTACK 1

- DON'T NEED CHARGING FILTER
- USE 1/4 WATT RESISTOR.





Update: Turns out the capacitor I used is electrolytic and designed for DC. It works fine, but try to find one that is shaped like a lentil. It will last a lot longer. But still make sure the one you use is a 4.7 μ F Non-Polarized (Bi-Polar).

<http://search.digikey.com/scripts/DkSearch/dksus.dll?Detail?name=P1199-ND>